



TF 42.7 TTCS



Maximum Load Capacity: 8,800 Lbs

Maximum Lift Height: 31'2"

Maximum Reach: 12'2"

Load Capacity at Max. Reach: 3,000 Lbs

Load Capacity at Max. Lift: 8,800 Lbs

PERFORMANCE

Unladen Weight (lbs)	16,400
Maximum Load Capacity (lbs)	8,800
Lift Height (ft)	31' 2"
Maximum Reach (ft)	12' 2"
Load Capacity at Max. Lift Height (lbs)	8,800
Load Capacity at Max. Reach (lbs)	3,000
Boom Side-Shift (in)	± 7.5
Frame Leveling	± 10°
Boom Sections	2

POWERTRAIN

Engine	Deutz
Displacement/Cylinders	4.1/4
Engine Power (HP)	136
Reversible Fan	●
Maximum Speed (mph)	25
Fuel Tank Capacity (gal)	37
AdBlue Tank Capacity (gal)	4.7
Hydrostatic Transmission	● -2V
EPD	Plus
Axles	Drop Portal
Reducers	RR700
Brakes	Dry Discs
Automatic Parking Brake	●

HYDRAULIC

Hydraulic Pump	LS + FS
Delivery/Pressure (psi-gal/min)	3,045-39.6
Hydraulic Oil Tank Capacity (gal)	29
Auxiliar Hydraulic Service on Boom	●
Rear Service Line	●

● Standard ● Optional

DIMENSIONS

Width (ft)	7' 5"	Length (ft)	14' 11"
Height (ft)	8' 4"	Wheelbase (ft)	9' 2"
Ground Clearance	1' 4"	Turning Radius Over Tires	13' 0"

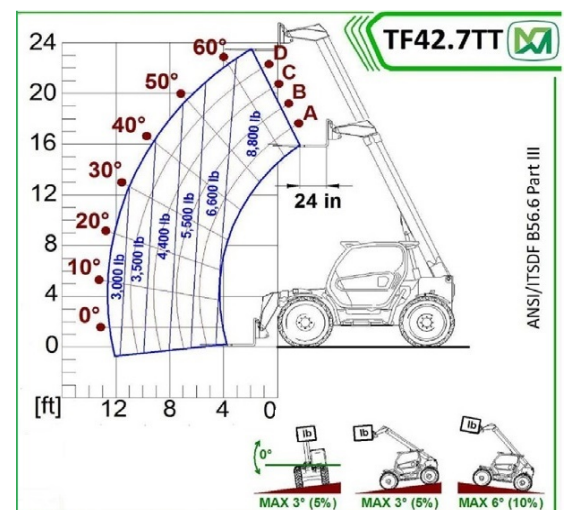
The technical data and other information in this document are not binding. We reserve the right to modify our products without prior notice as part of our policy of continuous improvement

CAB

Cab Finishing	ECO
MCDC	Light
FOPS II Cab	●
ROPS Cab	●
Controls	Electromechanical Joystick
Reverse Shuttle	Dual Reverse

CONFIGURATION

Hydropneumatic Suspension CS Merlo	-
Hydropneumatic Suspension BSS Merlo	●
Hydropneumatic Suspension EAS Merlo	-
Work lights on cab	●
Sun-shade in the cab	●
Tac-lock	●
Pre-arrangement for aerial work platform	●
Two floating forks	●
Pedal Inching-Control	●
Permanent four-wheel drive	●
4 Wheel Drive	●
3 Steering Modes	●
Standard tires	405/70-25"
Hydraulically controlled stabilizers	-
Turret rotation	-
Tractor type approval	●
PTO	●
3-point rear linkage	-



September 2020

IMPORTED & DISTRIBUTED BY



ams-merlo.com

803-327-4949

1205 Galleria Blvd., Rock Hill, SC 29730