



P 27.6 PLUS



Maximum Load Capacity: 6,000 Lbs

Maximum Lift Height: 19' 4"

Maximum Reach: 10' 9"

Load Capacity at Max. Reach: 2,000 Lbs

Load Capacity at Max. Lift: 3,300 Lbs

PERFORMANCE

Unladen Weight (lbs)	10,690
Maximum Load Capacity (lbs)	6,000
Lift Height (ft)	19' 4"
Maximum Reach (ft)	10' 9"
Load Capacity at Max. Lift Height (lbs)	3,300
Load Capacity at Max. Reach (lbs)	2,000
Boom Side-Shift (in)	-
Frame Leveling	-
Boom Sections	2

POWERTRAIN

Engine	Kohler
Displacement/Cylinders	3.3/4
Engine Power (HP)	75
Reversible Fan	●
Maximum Speed (mph)	25
Fuel Tank Capacity (gal)	18.8
AdBlue Tank Capacity (gal)	-
Hydrostatic Transmission	●
EPD	-
Axles	Axial
Reducers	Epicyclic
Brakes	Dry Discs
Automatic Parking Brake	●

HYDRAULIC

Hydraulic Pump	Gear
Delivery/Pressure (psi-gal/min)	3,045-24.8
Hydraulic Oil Tank Capacity (gal)	18.8
Auxiliar Hydraulic Service on Boom	●
Rear Service Line	●

● Standard ● Optional

DIMENSIONS

Width (ft)	6' 0"	Length (ft)	12' 10"
Height (ft)	6' 4"	Wheelbase (ft)	8' 0"
Ground Clearance	10"	Turning Radius Over Tires	11' 0"

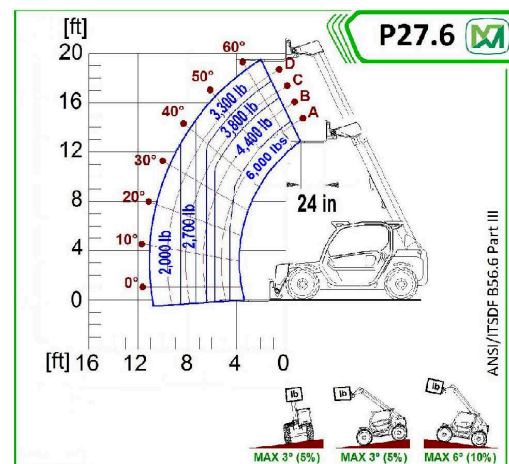
The technical data and other information in this document are not binding. We reserve the right to modify our products without prior notice as part of our policy of continuous improvement

CAB

Cab Finishing	ECO
MCDC	-
FOPS II Cab	●
ROPS Cab	●
Controls	Electromechanical Joystick
Reverse Shuttle	Finger Touch

CONFIGURATION

Hydropneumatic Suspension CS Merlo	-
Hydropneumatic Suspension BSS Merlo	●
Hydropneumatic Suspension EAS Merlo	-
Work lights on cab	●
Sun-shade in the cab	●
Tac-lock	●
Pre-arrangement for aerial work platform	●
Two floating forks	●
Pedal Inching-Control	●
Permanent four-wheel drive	●
4 Wheel Drive	●
3 Steering Modes	●
Standard tires	12-16.5
Hydraulically controlled stabilizers	-
Turret rotation	-
Tractor type approval	●
PTO	-
3-point rear linkage	-



September 2020

IMPORTED & DISTRIBUTED BY



ams-merlo.com

803-327-4949

1205 Galleria Blvd., Rock Hill, SC 29730