



# MF40.9 CS



**Maximum Load Capacity:** 8,800 Lbs

**Maximum Lift Height:** 28' 9"

**Maximum Reach:** 19' 0"

**Load Capacity at Max. Reach:** 1,750 Lbs

**Load Capacity at Max. Lift:** 6,500 Lbs



## PERFORMANCE

Unladen Weight (lbs)	20,100
Maximum Load Capacity (lbs)	8,800
Lift Height (ft)	28' 9"
Maximum Reach (ft)	19' 0"
Load Capacity at Max. Lift Height (lbs)	6,500
Load Capacity at Max. Reach (lbs)	1,750
Boom Side-Shift (in)	-
Frame Leveling	± 10°
Boom Sections	3

## POWERTRAIN

Engine	Deutz
Displacement/Cylinders	4.5/4
Engine Power (HP)	170
Reversible Fan	-
Maximum Speed (mph)	25
Fuel Tank Capacity (gal)	39.6
AdBlue Tank Capacity (gal)	4.7
Hydrostatic Transmission	● -2V
EPD	Top
Axles	Axial
Reducers	Epicyclic
Brakes	Dry Discs
Automatic Parking Brake	●

## HYDRAULIC

Hydraulic Pump	LS + FS
Delivery/Pressure (psi-gal/min)	3,045-39.6
Hydraulic Oil Tank Capacity (gal)	25.4
Auxiliar Hydraulic Service on Boom	●
Rear Service Line	●

● Standard    ● Optional

## DIMENSIONS

Width (ft)	7' 8"	Length (ft)	18' 0"
Height (ft)	8' 3"	Wheelbase (ft)	9' 7"
Ground Clearance	1' 5"	Turning Radius Over Tires	13' 9"

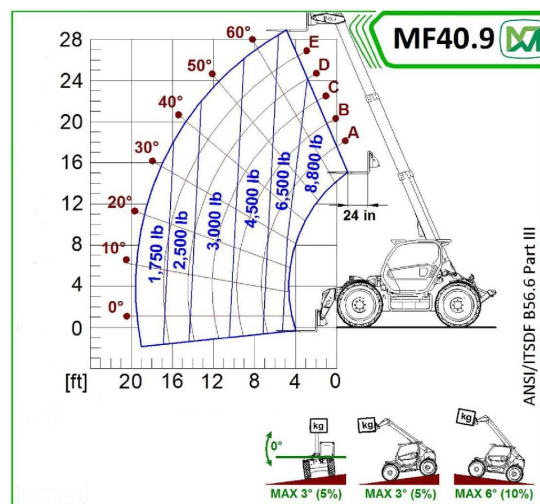
The technical data and other information in this document are not binding. We reserve the right to modify our products without prior notice as part of our policy of continuous improvement

## CAB

Cab Finishing	Premium
MCDC	Full
FOPS II Cab	●
ROPS Cab	●
Controls	Electromechanical Joystick
Reverse Shuttle	Dual Reverse

## CONFIGURATION

Hydropneumatic Suspension CS Merlo	●
Hydropneumatic Suspension BSS Merlo	●
Hydropneumatic Suspension EAS Merlo	-
Work lights on cab	●
Sun-shade in the cab	●
Tac-lock	●
Pre-arrangement for aerial work platform	●
Two floating forks	●
Pedal Inching-Control	●
Permanent four-wheel drive	●
4 Wheel Drive	●
3 Steering Modes	●
Standard tires	500/70-24"
Hydraulically controlled stabilizers	-
Turret rotation	-
Tractor type approval	●
PTO	540/1000
3-point rear linkage	●



September 2020

IMPORTED & DISTRIBUTED BY



ams-merlo.com

803-327-4949

1205 Galleria Blvd., Rock Hill, SC 29730